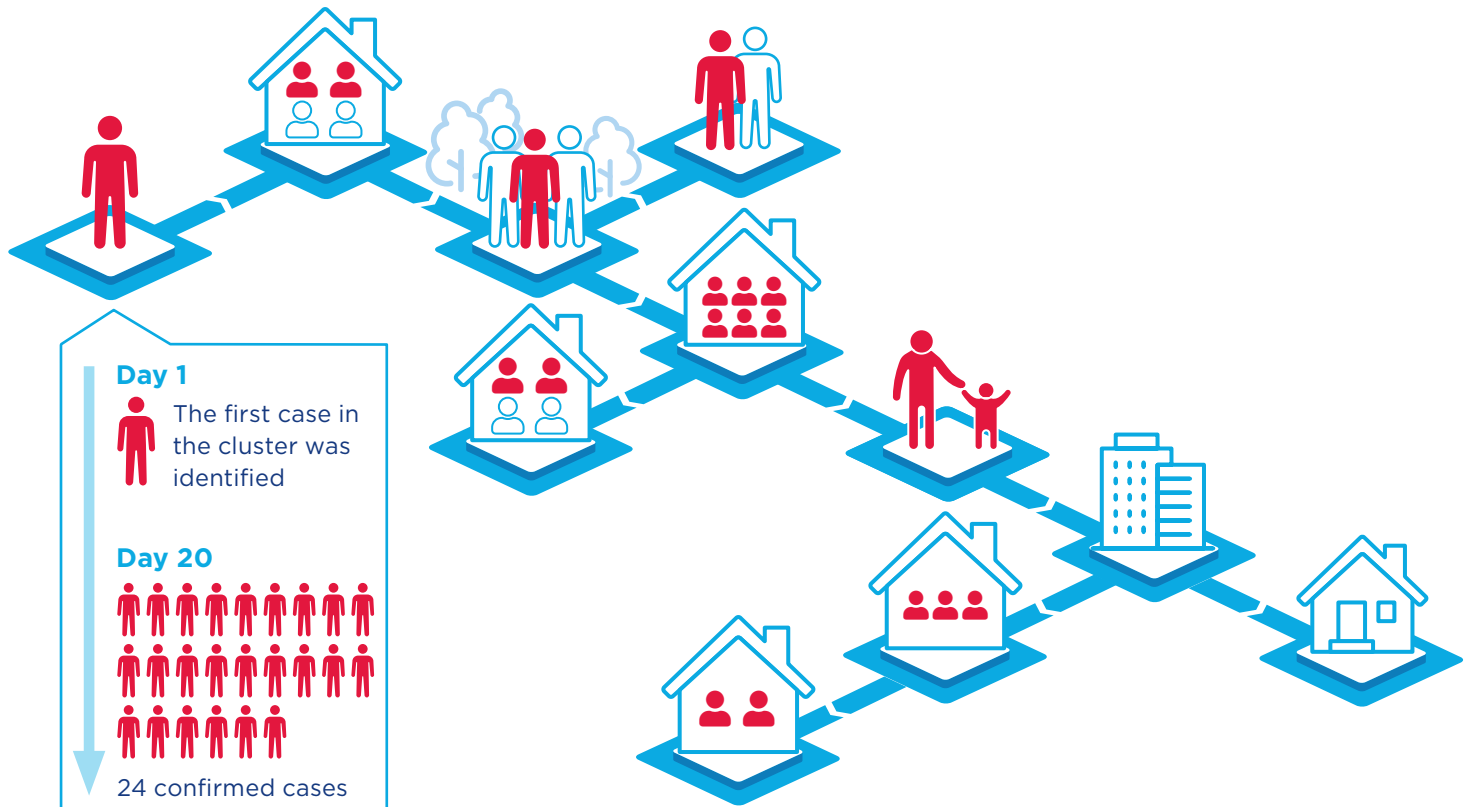



## WHY ONE COVID-19 CASE MATTERS

COVID-19 spreads among family and friends



**Households:**



Index case

**More than 650 close contacts**

**Close contact locations:**

- Homes
- Childcare facility
- Cultural venues
- Hospitality venues
- Group disability home
- Public hospital
- Outpatient clinic
- Park
- Retail shop